

CLARKE®



AIR NAIL GUN

MODEL NO: CNG1C

PART NO: 3110390

OPERATING & MAINTENANCE INSTRUCTIONS

UK
CA | CE

ORIGINAL INSTRUCTIONS

DL1122 - ISS 3

INTRODUCTION

Thank you for purchasing this CLARKE Nail Gun.

Before attempting to use this product, please read this manual thoroughly and follow the instructions carefully. In doing so you will ensure the safety of yourself and that of others around you, and you can look forward to your purchase giving you long and satisfactory service.

Please keep these instructions in a safe place for future reference.

SPECIFICATIONS

Model Number	CNG1C
Dimensions (L x W x H)	255 x 55 x 249 mm
Weight	1.4 kg
Air inlet connector	10mm quick fit
Min hose size	6mm (1/4")
Max air pressure	116 psi (8 bar)
Operating Pressure	60-100 psi (84-7bar)
Air Consumption	0.47 cfm (average)
Nail size	18gauge/15-50mm
Magazine capacity	100
Sound Power Level (LwA dB)	101 dB(A)

Please note that the details and specifications contained herein are correct at the time of going to print. However CLARKE International reserve the right to change specifications at any time without prior notice.

GENERAL SAFETY RULES



CAUTION: FAILURE TO FOLLOW THESE PRECAUTIONS COULD RESULT IN PERSONAL INJURY, AND/OR DAMAGE TO PROPERTY.

THE WORK ENVIRONMENT

1. ALWAYS keep the work area clean and tidy.
2. ALWAYS dress appropriately - Do not wear loose clothing or jewellery. Tie long hair out of the way.
3. ALWAYS keep children and visitors away - Do not let children handle the tool.
4. DO NOT operate the tool where there are flammable liquids or gases.

USE OF AIR POWERED TOOLS

1. ALWAYS stay alert and use common sense - do not operate the air tool when you are tired or under the influence of alcohol, drugs or medication.
2. ALWAYS wear eye protection when using the tool - Eye protection must provide protection from flying particles from the front and the side.
3. ALWAYS wear ear protection when using the air tool.
4. ALWAYS wear a good pair of industrial gloves.
5. DO NOT overreach - Keep proper footing and balance at all times.
6. NEVER use oxygen, CO², combustible gases or any type of bottled gas as a source of power for the tool.
7. DO NOT connect the air supply hose with your finger on the trigger.
8. DO NOT exceed the maximum recommended pressure for the tool.
9. ALWAYS check hoses for leaks or worn condition before use and ensure that all connections are secure.
10. DO NOT use the tool for any other purpose than described in this manual.
11. ALWAYS keep the air supply hose away from heat, oil and sharp edges.
12. DO NOT fit the tool to any stand or clamping device that may damage it.
13. DO NOT carry out any alterations or modifications to the tool.
14. ALWAYS disconnect from the air supply when:
 - Performing any maintenance.

- The tool is not in use.
- The tool will be left unattended.
- Moving to another work area.

15. NEVER use the tool if it is defective or operating abnormally.

16. Avoid damaging the tool by applying excessive force.

17. ALWAYS maintain the tool with care. Keep it clean for the best and safest performance.

18. Quick change couplings should not be located at the tool. They add weight and could fail due to vibration.

19. DO NOT force or misuse the tool. It will do a better and safer job at the rate for which it was designed.

20. NEVER carry the tool by the air supply hose.

21. NEVER carry the tool with your finger on the trigger.

22. When not in use disconnect the tool from the air supply and store in a dry place out of the reach of children.

NAIL GUN SPECIFIC SAFETY

1. **NEVER** drive in nails at the edge of a work surface, as the edge could fail and fly off, endangering yourself or others in the vicinity.
2. **NEVER** fire tool at an incline. It must be perpendicular to the work surface.
3. **NEVER** load the tool with nails BEFORE connecting to an air supply.
4. **NEVER** load the tool with the trigger depressed.

LIMITATIONS OF USE

This nail gun is suitable for use on materials such as:

- Soft wood, • Hardwood • MDF • Plywood • Hardboard
- Fibreboard • Corkboard • Flexible Plastics • Leather, • Fabrics
- PVC, Polythene sheet • Foam Rubber

This nail gun is NOT suitable for use on materials such as:

- Hard Laminates • Brittle Plastics • Metals (other than light foils)

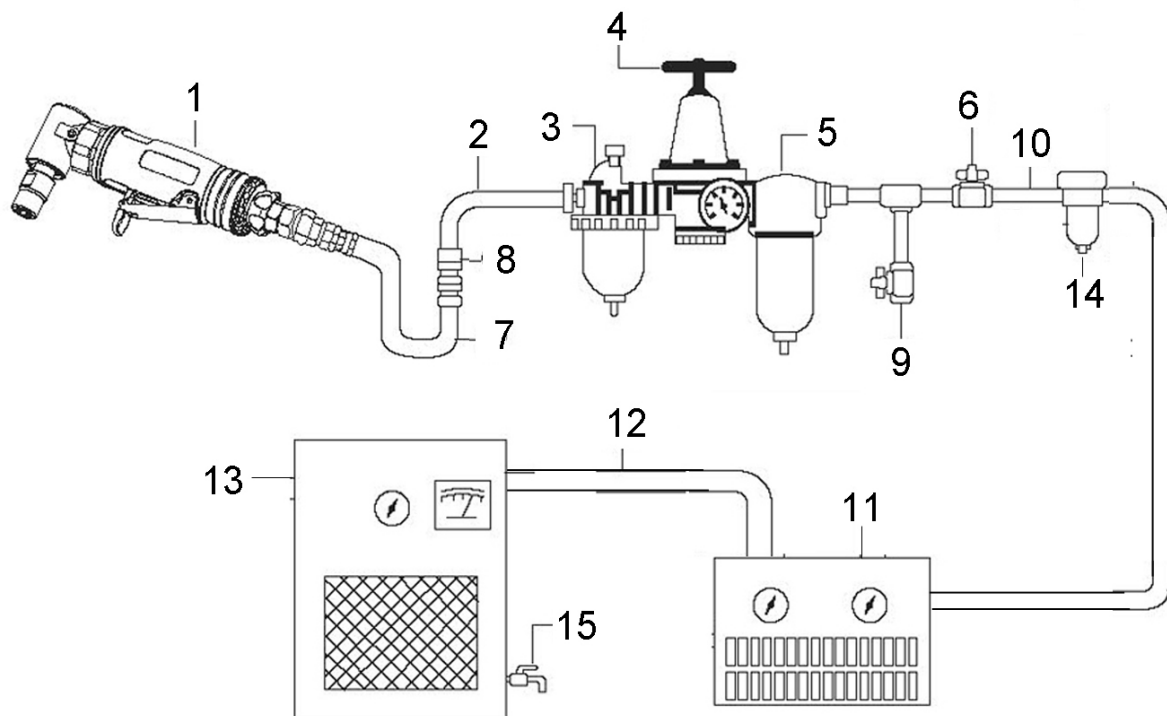
COMPRESSED AIR REQUIREMENTS



WARNING: COMPRESSED AIR CAN BE DANGEROUS. ENSURE THAT YOU ARE FAMILIAR WITH ALL PRECAUTIONS RELATING TO THE USE OF COMPRESSORS AND COMPRESSED AIR SUPPLY.

A typical air line layout is shown below. If an automatic in-line filter/regulator is used it will keep the tool in good condition, but should be regularly checked and topped up with oil. SAE 10 oil should be used and the lubricator adjusted to approx 2 drops per minute.

Use only clean, dry, regulated compressed air as a power source.



AIR SYSTEM LAYOUT :

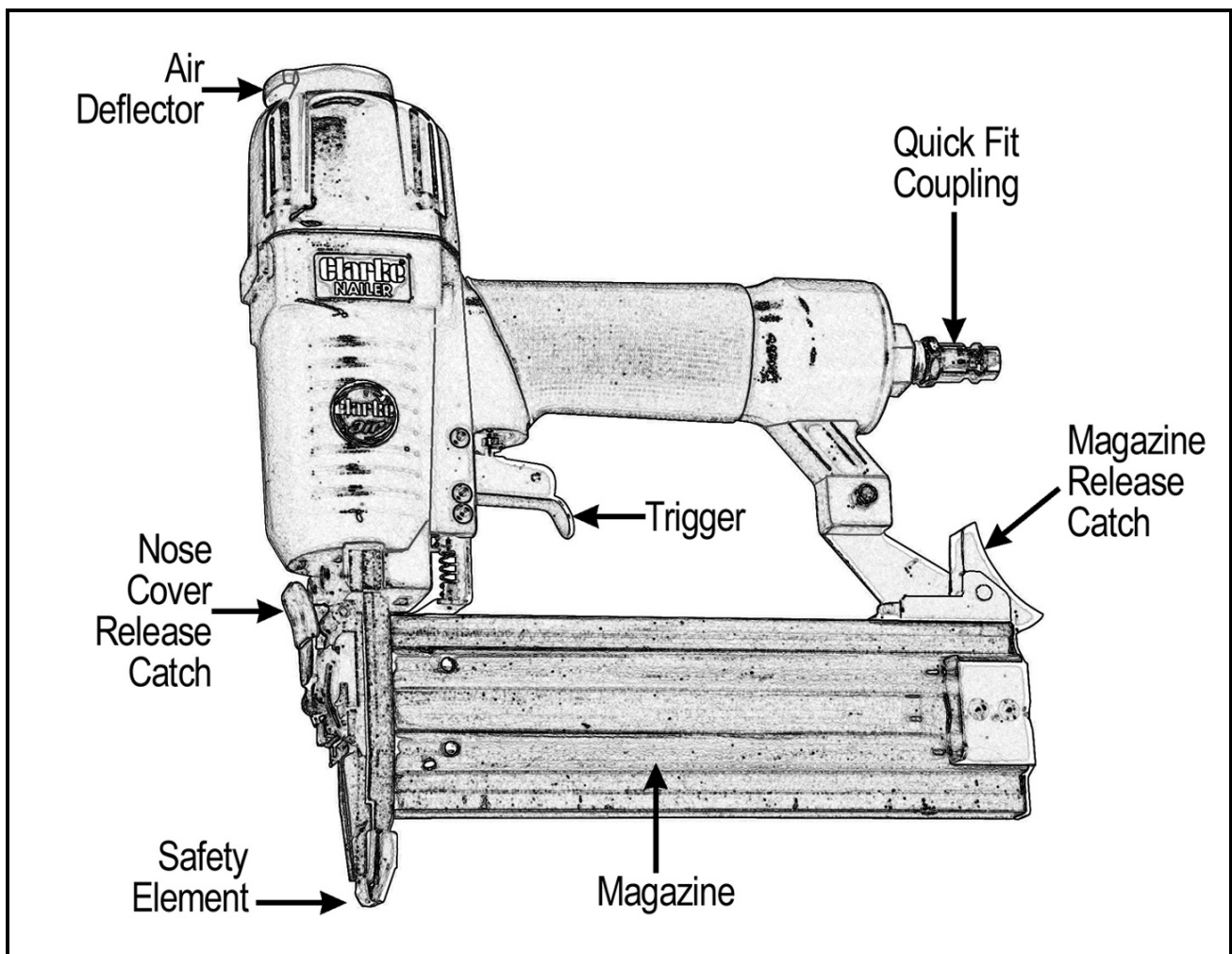
- | | |
|-------------------------------|-------------------------------------|
| 1. Air Tool | 9. Drain Valve |
| 2. Air Hose 3/8" (I.D.) | 10. 1/2" Or Larger Pipe And Fitting |
| 3. Oiler | 11. Air Dryer |
| 4. Pressure Regulator | 12. 1" Or Larger Pipe And Fitting |
| 5. Filter | 13. Air Compressor |
| 6. Shut Off Valve | 14. Auto Drain |
| 7. Whip Hose | 15. Drain Valve |
| 8. Coupler Body And Connector | |

A build-up of moisture or oil in the air compressor will accelerate wear and corrosion in the tool. ensure any moisture is drained from the compressor daily and the inlet filter is kept clean.

If an unusually long air hose is required, (over 8 metres), the line pressure or the hose inside diameter may need to be increased. The air hose must be rated at least 150% of the maximum operating pressure of the air tool.

Never exceed the maximum operating pressure for the tool. It is recommended that air pressure to this tool does not exceed 116 psi at the tool when running. Higher pressures and unclean air will shorten the life of the tool due to faster wear and is a possible safety hazard.

OVERVIEW



When opening the carton for the first time, check that all the items are present and in good condition. Any damage or deficiency should be reported to your CLARKE dealer immediately.

BEFORE USE



WARNING: COMPRESSED AIR CAN BE DANGEROUS. ENSURE THAT YOU ARE FAMILIAR WITH ALL PRECAUTIONS RELATING TO THE USE OF AIR COMPRESSORS AND A COMPRESSED AIR SUPPLY.

NOTE: Ensure the compressor is turned off.

1. Remove the plastic blanking plug from the air inlet connection.
2. Pour 2-3 drops of CLARKE airline oil into the inlet port. This should be done regardless of whether or not a lubricated air supply is to be used.
3. If required, connect an in-line mini oiler to the tool.
 - A mini oiler helps to prolong the life of any air tool.
4. Connect a suitable hose or use the inlet connector supplied to connect directly to the hose.
5. Connect the other end of the hose to the compressor.
 - PTFE tape may be useful for sealing threaded connections.
6. Turn on the air supply and check for air leaks. Rectify any found.
7. If using a mini oiler, place a sheet of paper next the exhaust port and squeeze the trigger for approximately 30 seconds. The oil volume is correctly set when a light stain of oil can be seen on the paper. Excessive oil should be avoided.

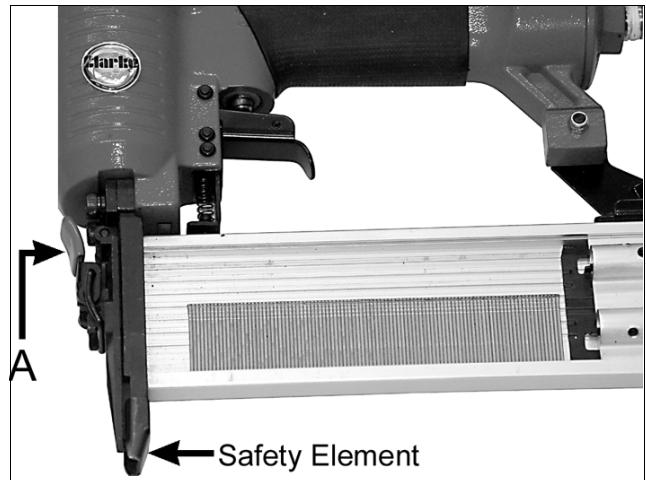
Your nail gun is now ready for use.

ASSEMBLY AND OPERATION

Ensure the tool is not loaded, then, with the air supply turned OFF, connect the air line to the nailer at the Quick Fit coupling.

With your fingers well away from the trigger and the tool pointed away from you and anyone in the vicinity, depress the magazine catch, pull out the magazine and load with appropriate nails or staples as shown.

Push the magazine back until it locks in position. Your nailer is now ready for use.



Turn on the air supply and check for air leaks. If any are apparent, rectify before proceeding. Ensure the operating pressure is set to between 4-7bar (60-100psi), depending upon the size of nail used and type of material being worked. The harder the material, and bigger the nail, the higher the pressure.

Hold the tool so that it is at right angles to the work. Lower it so that the Safety Element contacts the work surface, and is forced upwards. This movement releases the trigger, which may now be pulled, driving in the nail.

CLEARING A JAM

Should the gun jam, turn OFF the air supply and pull the trigger in order to ensure the airline is not under pressure. Release the nose catch (A Fig. 1), and clear the jammed nail from the within the nose. Secure the nose with the catch, turn ON the air supply and proceed to use the nailer.

DISCONNECTING THE AIR SUPPLY

1. Do not disconnect the air hose until the supply is isolated at a shut-off valve.
2. Once the pressure has been isolated, disconnect the air supply hose from the air tool.
3. Shut down the compressor at the end of the work session.

STORAGE

If the tool is to be stored, or is idle for longer than 24 hours, run a few drops of CLARKE air line oil into the air inlet, and run the tool for 5 seconds in order to lubricate the internal parts.

When not in use, disconnect from air supply, clean tool and store in a safe, dry place. When storing, replace the blanking plug to the air inlet once the airline is disconnected.

Avoid storing the tool where the temperature is below 0°C.

TROUBLESHOOTING

SYMPTOM	PROBLEM	SOLUTION
Tool runs weakly. Air flows weakly from exhaust.	<ol style="list-style-type: none"> 1. Motor parts jammed with gum/dirt. 2. Regulator in closed position. 3. General airflow blocked by dirt. 4. Worn or sticking mechanism due to lack of lubricant. 	<ol style="list-style-type: none"> 1. Examine the inlet air filter for cleanliness and clean if necessary. 2. Adjust regulator to open position. 3. Drip air tool lubricating oil into air inlet. Allow oil to soak moving parts before using.
Tool will not run. Air flows freely from exhaust.	<ol style="list-style-type: none"> 1. Motor vanes stuck due to buildup of foreign material. 	<ol style="list-style-type: none"> 1. Disconnect air supply and rotate tool assembly manually. 2. Try operating tool in short bursts. 3. Drip a few drops of air tool lubricating oil into air inlet to soak moving parts.
Tool will not shut off.	<ol style="list-style-type: none"> 1. Throttle O-rings damaged or ill-fitting in seat. 	<ol style="list-style-type: none"> 1. Return to CLARKE dealer for repair.

MAINTENANCE



WARNING: MAKE SURE THAT THE AIR TOOL IS DISCONNECTED FROM THE AIR SUPPLY BEFORE STARTING ANY CLEANING OR MAINTENANCE.

DAILY

1. Before use, drain water from the air tank, air line and compressor.
2. If no line lubricator or mini oiler is used, ensure that oil is applied to the tool on a daily basis through the air inlet connection. Run a few drops of oil through the tool before use. It may be entered into the tool air inlet, (ensuring the strainer is clear), or into the hose at the nearest connection to the air supply. Then operate the tool.
3. This procedure should be repeated after every two to three hours of use or at the start of the working day.
4. Keep the body of the tool clean and free from debris.

WEEKLY

1. Check the air inlet screen filter for blockage and clean if necessary.

CLEANING

1. Grit or gum deposits inside the tool may also reduce its efficiency.
2. After extensive use, remove the inlet screen filter and flush out the mechanism with gum solvent oil or an equal mixture of CLARKE air-line oil and paraffin. Allow to dry before use.

SERVICE AND REPAIR

1. If the tool runs erratically or becomes inefficient although the air supply is in good order, it may be necessary to dismantle the air motor and replace any worn or damaged parts. Such servicing and repair work should be carried out by a qualified service technician.
2. If the tool still runs erratically or becomes inefficient, and the air supply is of good quality, it may be necessary to dismantle the air motor and replace worn or damaged parts.
3. You may prefer to take the tool to your CLARKE dealer if internal maintenance is required.

PERFORMANCE

Please note that outside factors may effect the operation and efficiency of the air tool.

These include reduced compressor output, excessive drain on the airline, moisture ingress, restrictions in the air-line such as the use of connectors of incorrect size or poor condition which will reduce the air supply.

Your air tool has been designed to give long & trouble free service. If, however, having followed the instructions in this booklet carefully, you encounter problems, take the unit to your local CLARKE dealer.

ACCESSORIES

A wide range of accessories is available including filter/regulators, lubricators, high-pressure hoses (5 to 50 metres) etc.

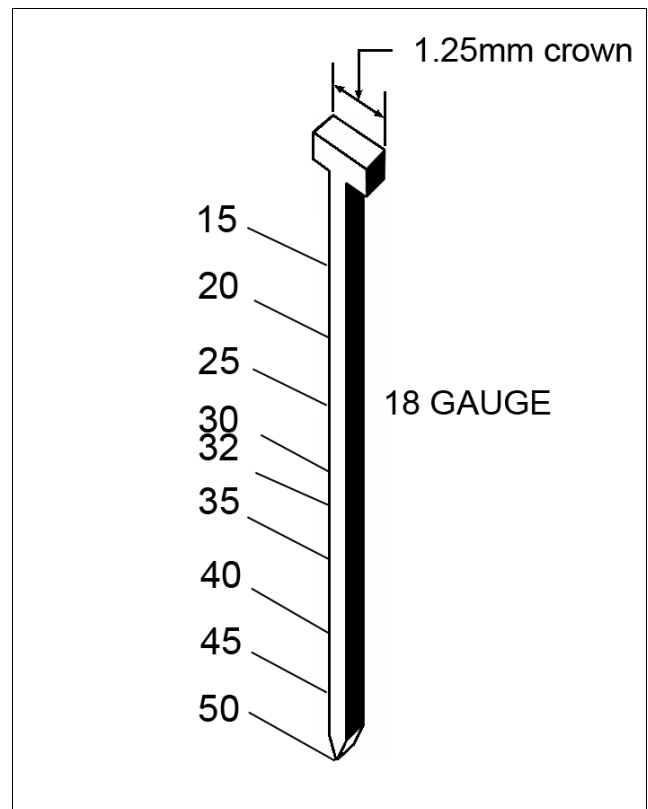
Contact your CLARKE dealer for further information or CLARKE International Service Department.

CLARKE Air Line Oil (part no. 3050825) is available from your CLARKE dealer.

CONSUMABLES

Nails - 18 Gauge - 1.25mm crown.

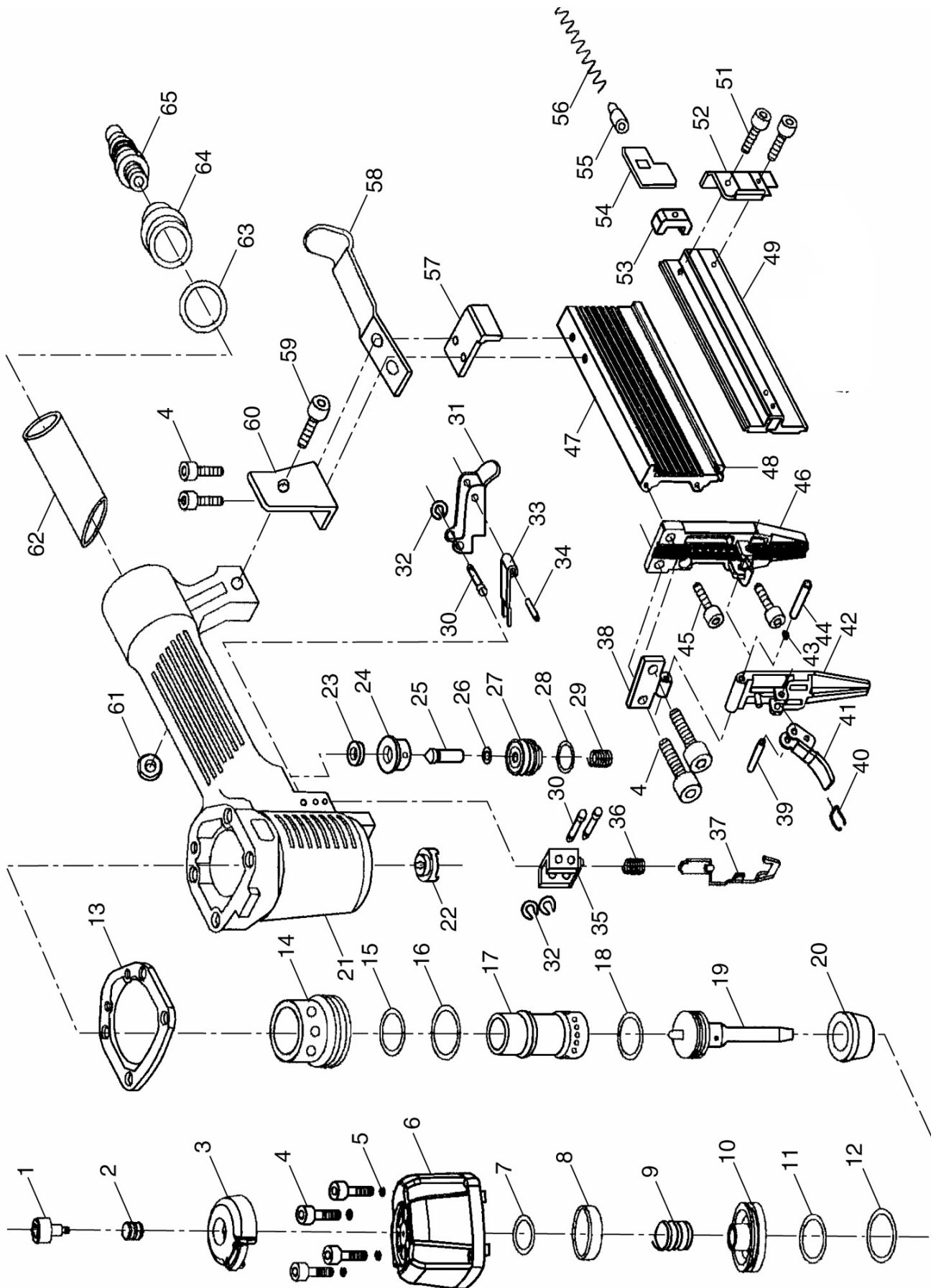
Length	Part No
15mm	1800413
20mm	1800415
30mm	1800417
32mm	1800419
35mm	1800421
40mm	1800423
45mm	1800425
50mm	1800427



PARTS LIST

1	Hex Socket Head Bolt	33	Bearing plate
2	Deflector Spring	34	Pin 2.5 x 16
3	Air Deflector	35	Bracket
4	Bolt M5x50	36	Pusher spring
5	Spring Washer	37	Safety element
6	Cylinder Head	38	Spacer
7	O-Ring 3.7x2.4	39	Pin 4 x 20
8	Sealing Washer	40	Clasp
9	Compression Spring	41	Quick release handle
10	Piston	42	Nose cover
11	O-Ring 31.2x2.5	43	Retaining ring
12	O-Ring 24.8x3.5	44	Pin 2.5 x 16
13	Gasket	45	Bolt M4 x 12
14	Exhaust collar	46	Guide nose
15	O-Ring 30x1.8	47	Label
16	O-Ring 42.6x2.35	48	Nail carrier
17	Cylinder	49	Magazine slide cover
18	O-Ring 21x3	52	End plate
19	Main piston	53	Clamp
20	Shock absorber	54	Nail pusher
21	Gun body	55	Spring adaptor
22	Rubber washer	56	Compression spring
23	Rectangle washer	57	Fixed plate
24	Trigger valve seat	58	Fixed lever
25	Trigger valve stem	59	Bolt M4 x 16
26	O-Ring 1.7x2	60	Support bracket
27	Trigger Valve Guide	61	Nut M4
28	O-Ring 11.2x2	62	Rubber grip
29	Compression spring	63	O-Ring 36.3 x 3.55
30	Pin	64	Endcap
31	Trigger	65	Quick release coupling
32	E-ring 2.5		

COMPONENT PARTS DIAGRAM



DECLARATION OF CONFORMITY



Hemhall Street, Epping, Essex, CM16 4LG

DECLARATION OF CONFORMITY

This is an important document and should be retained.

We hereby declare that this product(s) complies with the following statutory requirement(s):

Supply of Machinery (Safety) Regulations 2008

The following standards have been applied to the product(s):

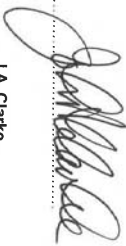
EN/ISO 11148-1:3:2018

The technical documentation required to demonstrate that the product(s) meet(s) the requirement(s) of the aforementioned legislation has been compiled and is available for inspection by the relevant enforcement authorities.

The UKCA mark was first applied in: 2022

Product Description: Air Nail Gun
Model number(s): CNG1C
Serial / batch Number: N/A
Date of Issue: 06/10/2022

Signed:


J.A. Clarke
Director



Fitzwilliam Hill, Fitzwilliam Place, Dublin 2

DECLARATION OF CONFORMITY

This is an important document and should be retained.

We hereby declare that this product(s) complies with the following directive(s):

2006/42/EC Machinery Directive

The following standards have been applied to the product(s):


EN/ISO 11148-1:3:2018

The technical documentation required to demonstrate that the product(s) meet(s) the requirement(s) of the aforementioned directive(s) has been compiled and is available for inspection by the relevant enforcement authorities.

The CE mark was first applied in: 2002

Product Description: Air Nail Gun
Model number(s): CNG1C
Serial / batch Number: N/A
Date of Issue: 06/10/2022

Signed:


J.A. Clarke
Director

GUARANTEE

This product is guaranteed against faulty manufacture for a period of 12 months from the date of purchase. Please keep your receipt which will be required as proof of purchase.

This guarantee is invalid if the product is found to have been abused or tampered with in any way, or not used for the purpose for which it was intended.

Faulty goods should be returned to their place of purchase, no product can be returned to us without prior permission.

This guarantee does not effect your statutory rights.

A SELECTION FROM THE VAST RANGE OF

Clarke®

QUALITY PRODUCTS



AIR COMPRESSORS

From DIY to industrial, Plus air tools, spray guns and accessories.

GENERATORS

Prime duty or emergency standby for business, home and leisure.

POWER WASHERS

Hot and cold, electric and engine driven - we have what you need

WELDERS

Mig, Arc, Tig and Spot. From DIY to auto/industrial.

METALWORKING

Drills, grinders and saws for DIY and professional use.

WOODWORKING

Saws, sanders, lathes, mortisers and dust extraction.

HYDRAULICS

Cranes, body repair kits, transmission jacks for all types of workshop use.

WATER PUMPS

Submersible, electric and engine driven for DIY, agriculture and industry.

POWERTOOLS

Angle grinders, cordless drill sets, saws and sanders.

STARTERS/CHARGERS

All sizes for car and commercial use.

PARTS & SERVICE: 0208 988 7400

Parts Enquiries
Parts@clarkeinternational.com

Servicing & Technical Enquiries
Service@clarkeinternational.com

SALES: UK 01992 565333 or Export 00 44 (0)1992 565335

Clarke INTERNATIONAL Hemnall Street, Epping, Essex CM16 4LG
www.clarkeinternational.com